

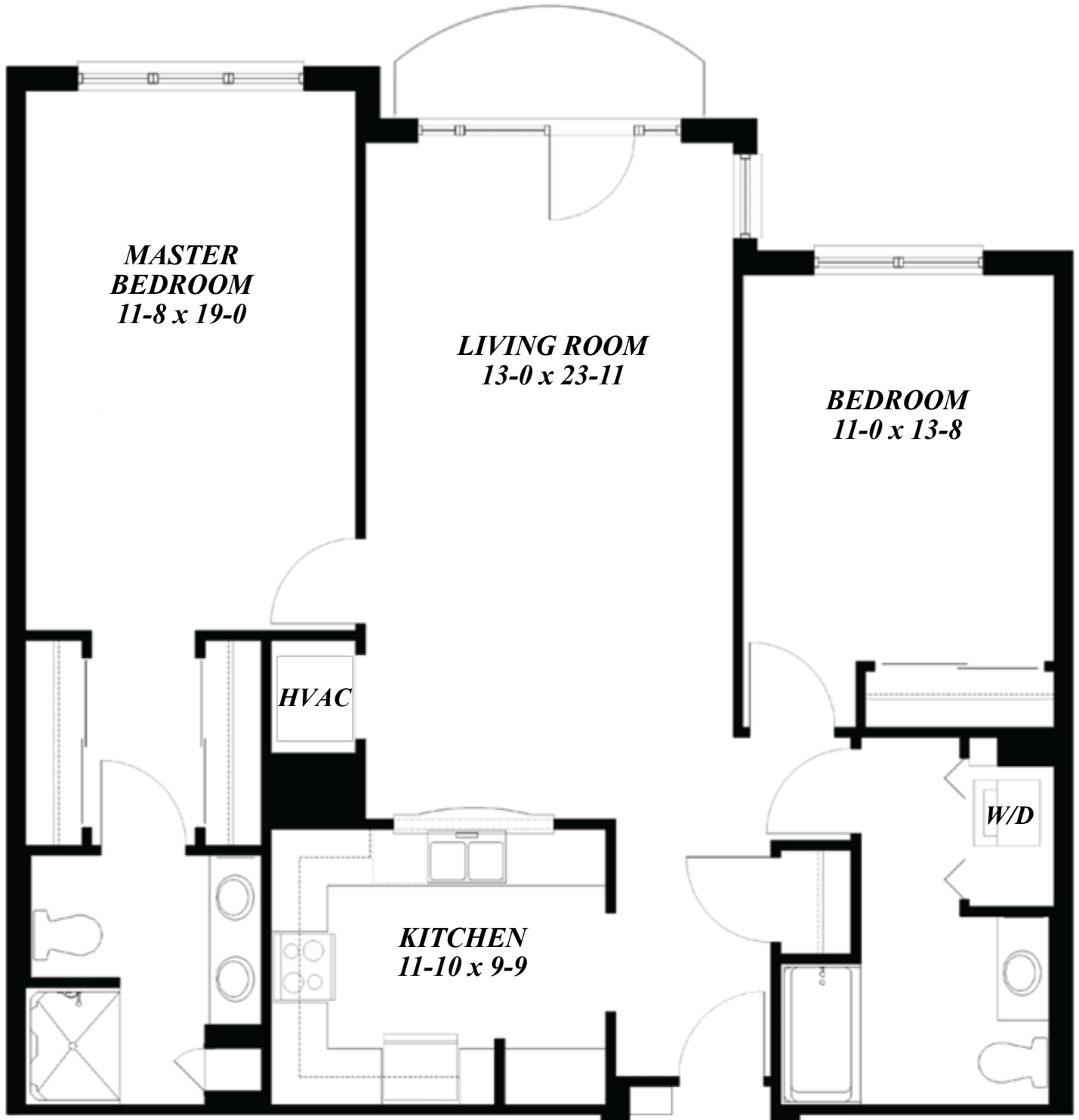


EASTCASTLE PLACE

The Classic

2024 Entrance Fee: \$455,000
2024 Monthly Fee: \$5,393 (Single)
\$7,003 (Double)

2 Bedroom, 2 Bath with Balcony - 1255 sq. ft.



North Point Terrace Apartments 1309, 2309, 3309 and 4309 with balcony.

FEATURES AND AMENITIES

- Flexible meal plan
- Restaurant style dining
- Continental breakfast
- Wellness program - health education, screening programs and promoting well-being
- Personal trainer/fitness classes
- Cultural, social, educational and recreational activities
- Religious services
- Scheduled transportation
- Concierge services
- On-site medical services
- Health service navigation
- Massage therapy
- Salon services
- Surface lot parking
- Available underground heated parking
- Pets welcome
- Bi-weekly housekeeping
- Weekly flat linen service
- Utilities including electricity, heating/air conditioning water, sewer and trash
- Individually controlled heating and air conditioning
- Smoke detectors, carbon monoxide detectors and sprinkler system
- Interior and exterior maintenance
- Washer and dryer
- Basic cable television & Internet
- Additional storage unit
- Fully equipped kitchen
- 24-hour emergency call system
- Resident check in system
- 24-hour security monitoring
- Emergency pendant

COMMUNITY SPACES

- The Gilman Dining room and bistro
- The 1884 Bar/Lounge
- Private dining rooms
- Meditation room
- General Store
- Resource center with computers and printer
- Creativity center
- Garden terrace
- Exterior courtyards
- Movie theater
- Art studio
- Dedicated card and meeting rooms
- Aquatic, spa & wellness center
- Libraries
- Classrooms

Ask us about additional features unique to this floor plan



2505 E Bradford Ave • Milwaukee, WI 53211 • www.eastcastleplace.com